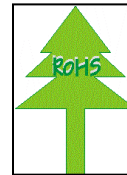
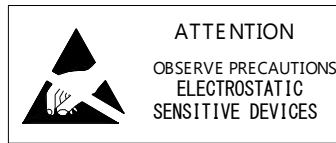




深圳市佰强光电有限公司

P/N:	BQ-0402 白光 YAW-W10YJC
REV:	01

SPECIFICATIONS 产品规格书



Customer : _____
客户名称 : _____
Product Discription : _____
产品描述 : CHIP VIEW white LED
P/N : _____
产品型号 : BQ-0402 白光 YAW-W10YJC
Issue Date : _____
发出日期 : 2022.9.13

Prepared By 制订	Checked By 审核	Approved By 批准
张秋枚	蔡雪梅	陈国峰

APPROVED SIGNATURES 客户确认		
Purchase Dept. 采购部	Quality Dept. 品质部	Engineering Dept. 技术部



深圳市佰强光电有限公司

P/N:	BQ-0402 白光 YAW-W10YJC
REV:	01

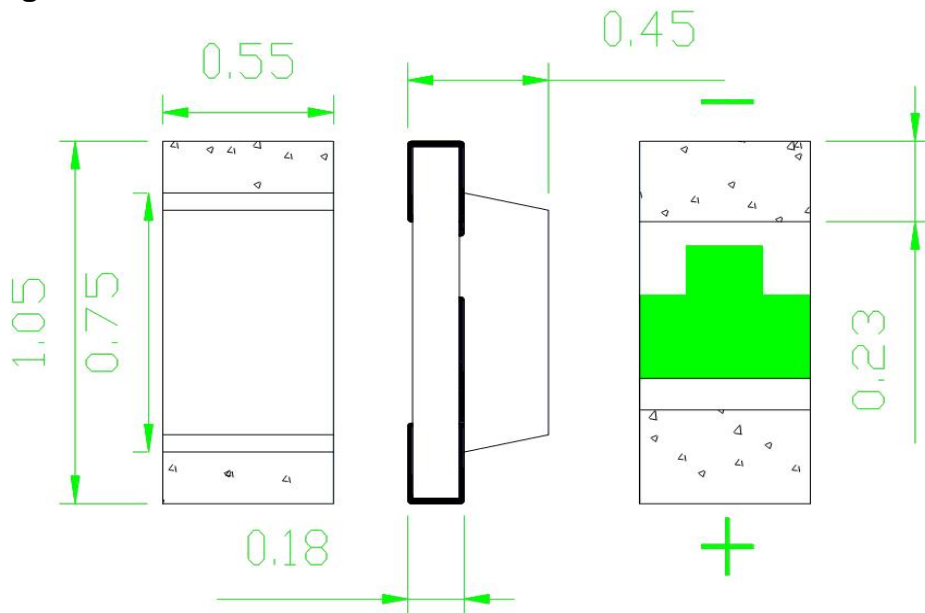
※ **Features (产品特征)**

1. Outline Package:1.05*0.55*0.45mm (Chip View white LED)
外型尺寸: 1.05*0.55*0.45mm
2. Emitted Color: white
发光颜色: 白光
3. Lens Appearance: Yellow Disffuser
胶体颜色: 黄色不透明
4. Comply with RoHS
完全符合 ROHS 指令
- 5 PACKAGE:4000PCS / REEL.
编带包装: 4000PCS/卷

※ **Applications (产品应用)**

1. Optical indicators 光学指示
2. LCD Backlighting 背光显示
3. indoor display screen 户内显示屏
4. mobile telephone keypad lights 手机按键灯
5. general use 一般应用

※ **Package Outline Dimensions 外型尺寸图**



NOTES:

1. All dimensions are in millimeters (inches);
单位: 毫米 (英寸)
2. Tolerances are $\pm 0.1\text{mm}$ (0.004inch) unless otherwise noted.
未标公差处公差为 0.1mm(0.004 寸)



深圳市佰强光电有限公司

P/N:	BQ-0402 白光 YAW-W10YJC
REV:	01

Absolute maximum ratings at Ta=25°C 最大绝对额定值

Parameter 参数	Symbol 符号	Value 值	Unit 单位
Power dissipation 功率耗损	Pd	16	mW
Forward current 正向电流	If	20	mA
Reverse voltage 反向电压	Vr	5	V
Operating temperature range 工作温度范围	Top	-40 ~+85	°C
Storage temperature range 贮存温度范围	TsQW	-40~+100	°C
Soldering Temperature 焊接温度	Tsol	Max.260°C for 3 sec Max.	
Peak pulsing current 最大脉冲电流	Ifp	100	mA

NOTE: IFP Conditions: Pulse Width \leq 10msec. and Duty cycle \leq 1/10.

IFP 条件: 脉冲持续时间 \leq 10msec, 占空因素 \leq 1/10

※ Electrical-optical characteristics at Ta=25°C 电性光电特性

Parameter 参数	Test Condition 测试条件	Symbol 符号	Value 值			Unit 单位
			Min.	Typ.	Max.	
Forward voltage 正向电压	If=5mA	VF	2.6	---	2.9	V
Luminous intensity 发光强度	If=5mA	IV	200	---	320	mcd
Viewing angle at 50% Iv 半功率角	If=5mA	2 θ 1/2	--	140	--	Deg
Color temperature 色温	If=5	TC	--	19000	--	--
Reverse current 反向电流	Vr=5V	IR	--	--	1	μ A

NOTE: 1. Tolerance of luminous intensity is \pm 10%

发光强度公差为 \pm 10%

2. Tolerance of forward voltage is \pm 0.05V

正向电压公差 \pm 0.05v

3. Tolerance of measurement of dominant wavelength is \pm 1nm. 主波长公差 \pm 1nm.



深圳市佰强光电有限公司

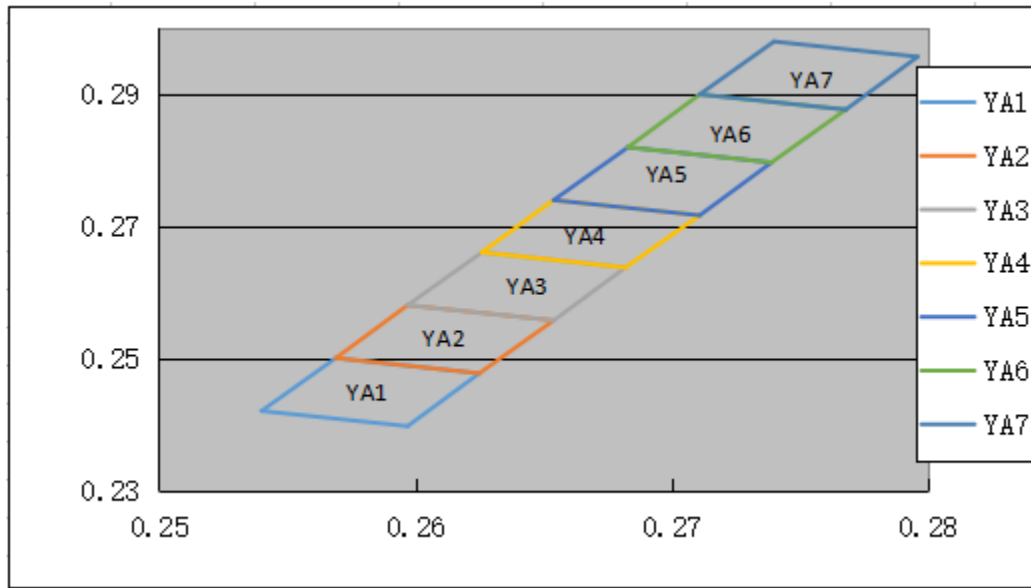
P/N:	BQ-0402 白光 YAW-W10YJC
REV:	01

(1) Intensity And Color Bin Limits(亮度及颜色等级范围)

Luminous Intensity (Tolerance is $\pm 10\%$ @ $I_F=5mA$) 亮度等级

BIN Code	Min. (mcd)	Max. (mcd)
1	200	250
2	250	320

(2) Color Bin Limits<5MA>



区块代码	X1	Y1	X2	Y2	X3	Y3	X4	Y4
YA1	0.254	0.242	0.2597	0.2397	0.2625	0.2477	0.2569	0.25
YA2	0.2569	0.25	0.2625	0.2477	0.2654	0.2557	0.2597	0.258
YA3	0.2597	0.258	0.2654	0.2557	0.2682	0.2637	0.2626	0.266
YA4	0.2626	0.266	0.2682	0.2637	0.2711	0.2716	0.2654	0.2739
YA5	0.2654	0.2739	0.2711	0.2716	0.2739	0.2796	0.2683	0.2819
YA6	0.2683	0.2819	0.2739	0.2796	0.2768	0.2876	0.2711	0.2899
YA7	0.2711	0.2899	0.2768	0.2876	0.2796	0.2956	0.274	0.2979

(3) Forward Voltage (Tolerance is $\pm 0.05V$ @ $I_F=5mA$) 正向电压等级

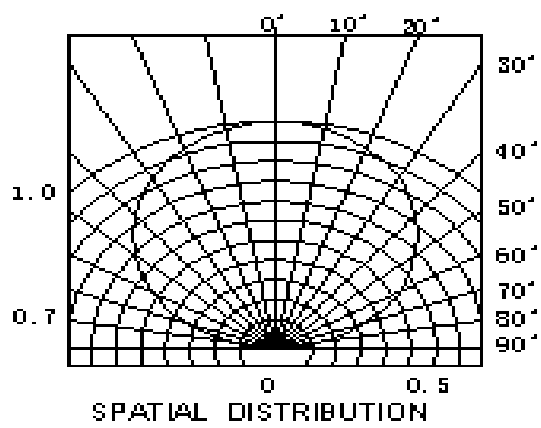
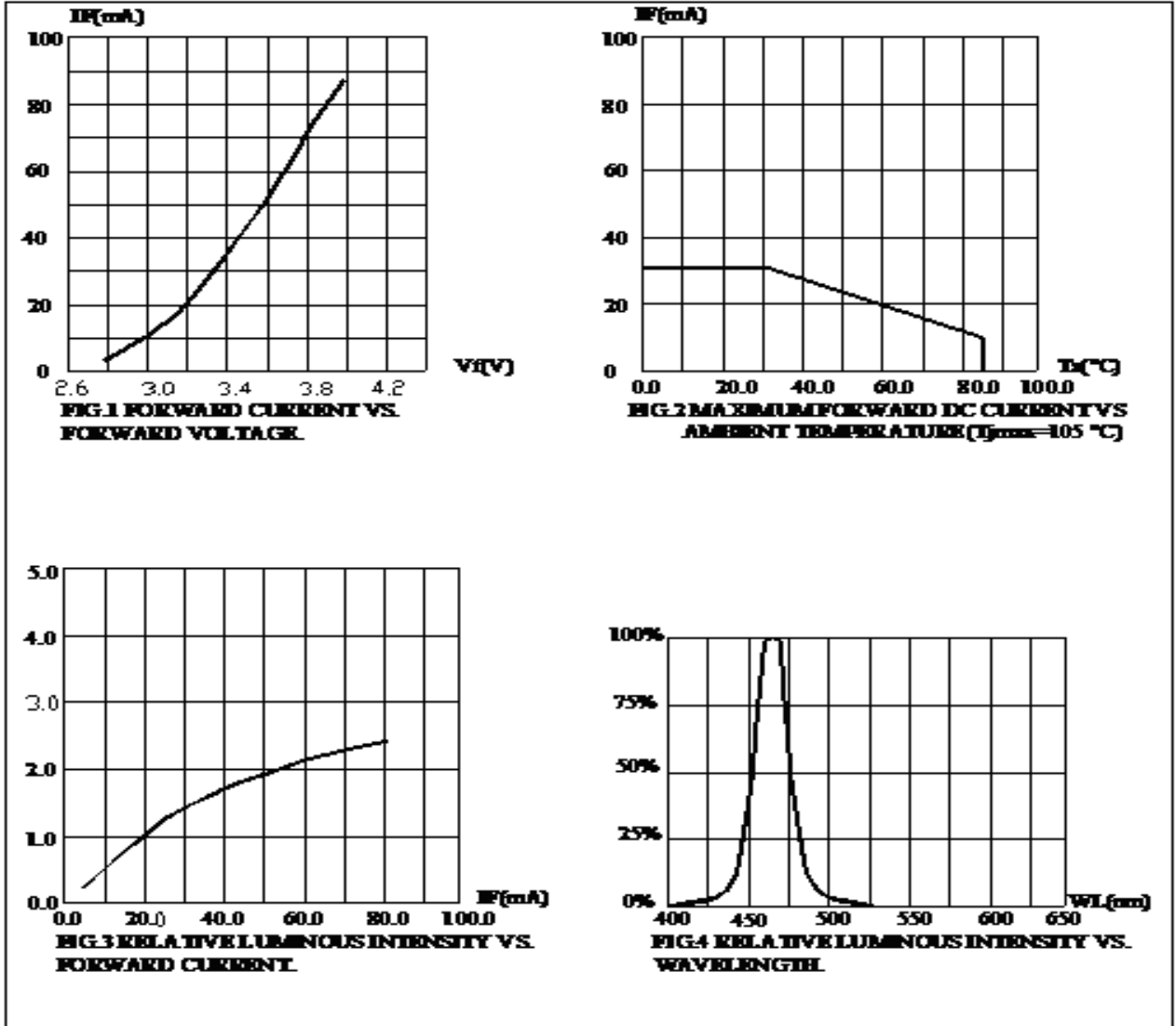
BIN Code	Min. (v)	Max. (v)
1	2.6	2.7
2	2.7	2.8
3	2.8	2.9



深圳市佰强光电有限公司

P/N:	BQ-0402 白光 YAW-W10YJC
REV:	01

※ Typical optical characteristics curves 典型光电特性曲线



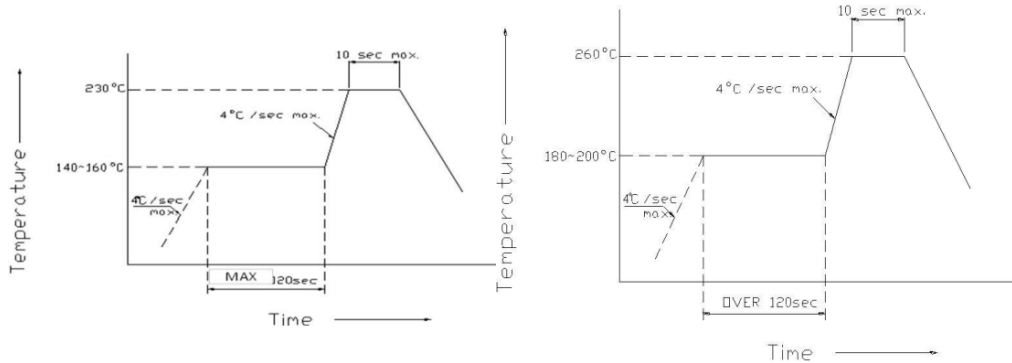


P/N:	BQ-0402 白光 YAW-W10YJC
REV:	01

※ Precautions for use 使用规范

Reflow Profile 回流焊规范

Pb-free Solder temperature Profile 无铅产品回流焊温度条件曲线规范



Recommended Soldering Pattern 建议焊接模式

(Units : mm)



Note: a)Reflow soldering should not be done more than two times. 材料焊接次数不超过 2 次。

b)Do not put stress on the LEDs when soldering. 焊接时请不要重压 LED 灯。

c)Do not warp the circuit board before it have been returned to normal ambient conditions after soldering. 焊接后温度未回降到常温时请勿扭曲线路板。

Hand Soldering Profile 手工焊接规范

The temperature of the iron should be lower than 300 °C and soldering within 3sec per solder-pad is to be observed. 手工焊接时，烙铁温度不高于 300 °C，每个焊脚焊接时间不超过 3 秒

Storage Profile 储存规范

1. Do not open the moisture proof bag before ready to use the LEDs
请在未准备使用 LED 之前不要打开防静电袋子。
2. The LEDs should be kept at 30 °C or less and 60%RH or less before opening the package.
The max. storage period before opening the package is 1 year.
LED 在未开封之前应保存在 30 °C 以下，湿度在 60% 以下的环境中，最长保存期为 1 年。
3. After opening the package, the LEDs should be kept at 30 °C/40%RH or less, and it should be used within 7 days
打开包装袋后，LED 需保存在 30 °C/40% 湿度以下的条件，且必须在 7 天内使用完。
4. If the LEDs be kept over the condition of 3, baking is required before mounting. Baking condition as below: 60 ± 5 °C for 24 hours
如果 LED 超出了第 3 点要求，则 LED 必须经过烘烤才能使用，烘烤条件为：60 ± 5 °C，24 个小时

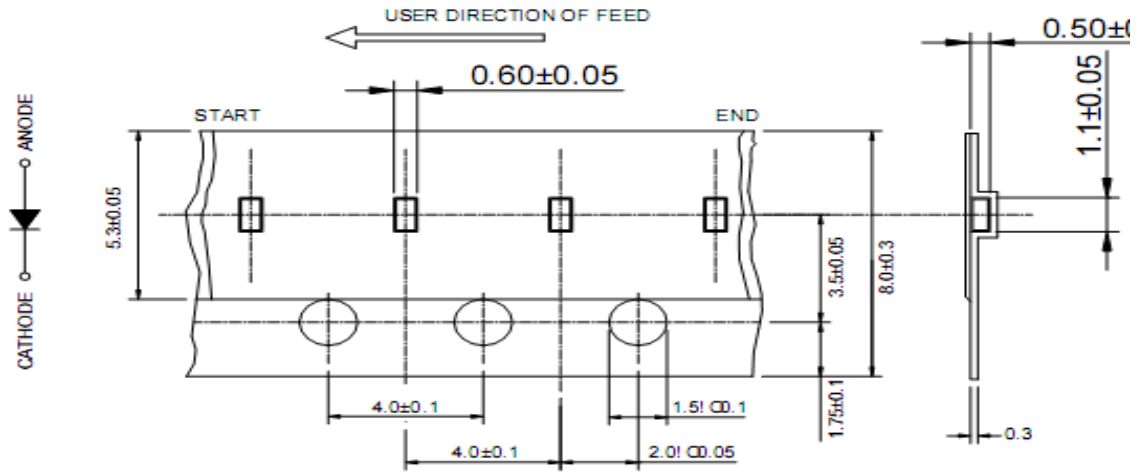


深圳市佰强光电有限公司

P/N:	BQ-0402 白光 YAW-W10YJC
REV:	01

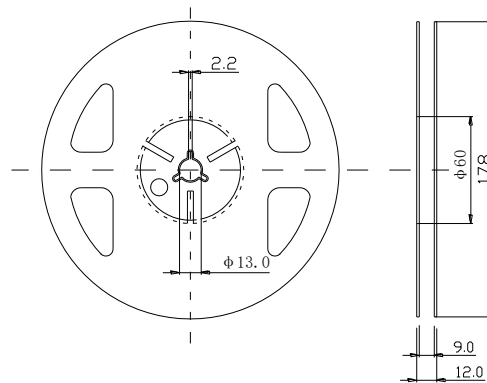
包装 PACKAGING

LEDs 在装带之后纸箱包装. The LEDs are packed in cardboard boxes after taping.

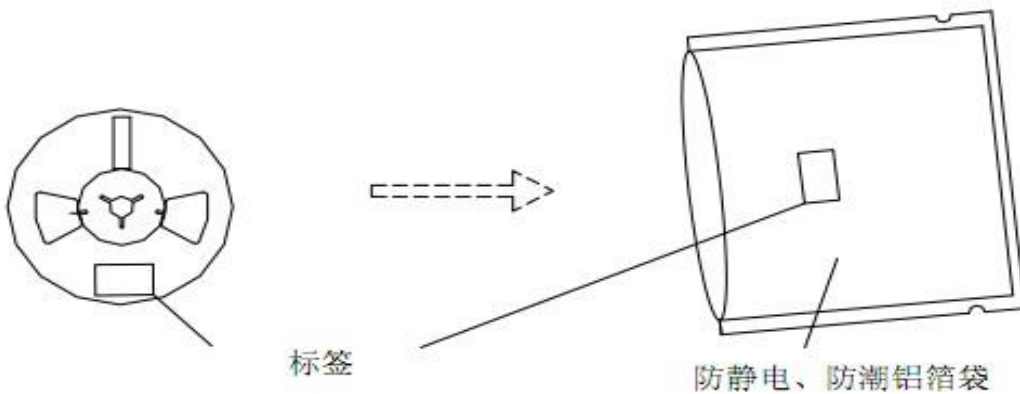


Reel Dimensions

卷轴尺寸



Moisture Resistant Packaging 防潮带包装



Note: The tolerances unless mentioned is ± 0.1 mm, Unit: mm 注: 标注公差为 ± 0.1 MM, 单位: MM